

GET YOUR KICKS on ILLINOIS

JUNE 9 - 13, 2025 (5 days)



Day 1: *If you ever plan to motor west, travel my way, take the highway that is best-Route 66.*



It is one of the original U.S. highways, established November 11, 1926. We begin our travels in **Joliet: Illinois Rock & Roll Museum**. Situated along the iconic Mother Road, this museum celebrates the legendary artists and bands (many of whom arrived via Route 66) who shaped the genre.



Braidwood: Lunch (on own) at the **Polka Dot Diner**. This roadside diner with a 1950s retro theme, attracts one and all with its tableside juke

boxes and memories of Elvis Presley, Betty Boop, and Marilyn Monroe. Following Route 66 with our very special Guide. **Gardner:** the historic **Two-Cell Jail** built in



1906. "Go behind bars" and get a photo. **Dwight: Ambler's Texaco Gas Station**, originally built in 1933. The station's cottage design was



very common along Route 66. **Pontiac: Route 66 Hall of Fame & Museum**. Explore three floors filled with thousands of artifacts and memorabilia related to Route 66 – The Mother Road. Don't miss the



largest **Route 66 mural** on the route. **Lexington: Memory Lane**, a one mile stretch of the original 1926 road with the 1940 billboards and Burma Shave signs. **Towanda: Dead Man's Curve**. It is a



notorious and historically significant bend on the original alignment of Route 66. The sharp curve earned its ominous name due to the numerous accidents and fatalities that occurred there, especially during the early days of the highway. A point of interest for Route 66

aficionados exploring the storied path of the Mother Road. Overnight in Bloomington. **Day 2: Shirley: Funk Prairie Home and Gem & Mineral Museum**. A little off the Route 66, but a must visit to glimpse into the 19th



century prairie life. LaFayette Funk was a co-founder of the Illinois State Fair and the Funk Hybrid Corn. An unbelievable collection of mineral, fossils and Native American artifacts. **Springfield: Motorhead Bar/Grill** Lunch. A Historic Route 66 stop designed with car and racing enthusiasts in mind. Maybe have the Culinary Icon Ponyshoe sandwich, featured on Diner, Drive-in & Dives TV show. A guided city tour with a visit to the



Abraham Lincoln Presidential Library. Experience key moments of Lincoln's life from triumph to tragedy. Artifacts that can't be found anywhere else in the world. Lodging at the Drury Inn & Suites with the Kickback snacks/meal for dinner. Save room for the **Cozy Dog Drive In** on Route 66 this evening. Serving the public over 70 years and still



using the same batter recipe developed in 1946. After our Cozy Dog, **The Illinois**



Route 66 Experience. A bird's eye view of Illinois' mother road, highlighting 92 communities along the Nostalgic 66 Route from Chicago to Madison.



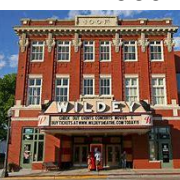


Day 3: Ace Sign Co. A fascinating journey through the history of American signage and advertising. **Auburn:** Drive on a unique and historic stretch of Route 66 – A Brick Road. Made of

red bricks from the 1930's. **Girard: Doc's Just Off 66.** Originally opened as a service station in the heyday of Route 66, it has long been a welcoming stop for travelers. Enjoy an Ice Cream Sundae, the Postcard Mural and the Route 66 Monument stands as a proud symbol of the legendary highway. **Carlinville: Turkey Tracks on 66.** A quirky and beloved piece of the highway's folklore. Embedded in a section of the original concrete pavement laid in the 1920's. **Reno's Pizzeria & Ristorante** for Lunch. See the **Cannonball Jail, Macoupin County Courthouse, and the Sears Catalog Homes** on a City tour. **Litchfield:** Lodging, and Dinner at the **Ariston Café**, one of the oldest American Restaurants on the Legendary Route 66, it opened in 1924.



Day 4: Litchfield Museum & Route 66 Welcome Center. A charming destination celebrating the significance of Litchfield on Route 66. **Staunton: Henry's Rabbit Ranch.** Another quirky roadside attraction. It evokes the spirit of the golden age with a replica vintage gas station, classic cars & vintage signs. Also, a collection of whimsical Volkswagen Rabbits. **Livingston: Pink Elephant Antique Mall.** A treasure trove of antiques, vintage finds and memorabilia. Don't Miss the eye-catching statues – Vibrant Pink Elephant, Flying Saucer, Muffler Man, & more. Visit two retro shops – **The Mother Road Fudge Factory/Candy Shop**, a 1950's theme candy store & **The Twistee Treats Diner** in an ice cream cone shaped building. **Hamel: Weezy's** a classic roadside diner established in 1930's for Lunch. **Edwardsville: Wildey's Theatre**, a gem with rich history dating back to 1909. Popcorn and a Movie about the theater. **West End Service Station.** Established in late 1930, it was a quintessential roadside service for the many travelers. **St Louis MO: Chain of Rocks Bridge.** Spanning the Mississippi river from **Madison.** Build in 1929,



the mile long bridge is renowned for its distinctive 30-degree bend near the middle. **Collinsville: World's largest Ketchup bottle**, another roadside attraction on Route 66 standing 170 ft tall and constructed in 1949. Also known as the Horseradish Capital of the world. **Willoughby Heritage Farm** for dinner and entertainment. **Day 5:** Travel Home from St Louey, we got our Kicks on Route 66.



TOUR INCLUDES: All Attractions, 11 Meals (4 B, 3 L, 4 D, + 2 snacks), 4 Nights Quality Lodging, Travel via Motorcoach.

\$1149 per person DOUBLE,
Triple \$1363., Quad \$1304., Single \$1786.

Deposit \$100 per person due with reservation.
Balance due May 9, 2025.

Departs: Ft. Wayne, Auburn, Kendallville, Goshen

